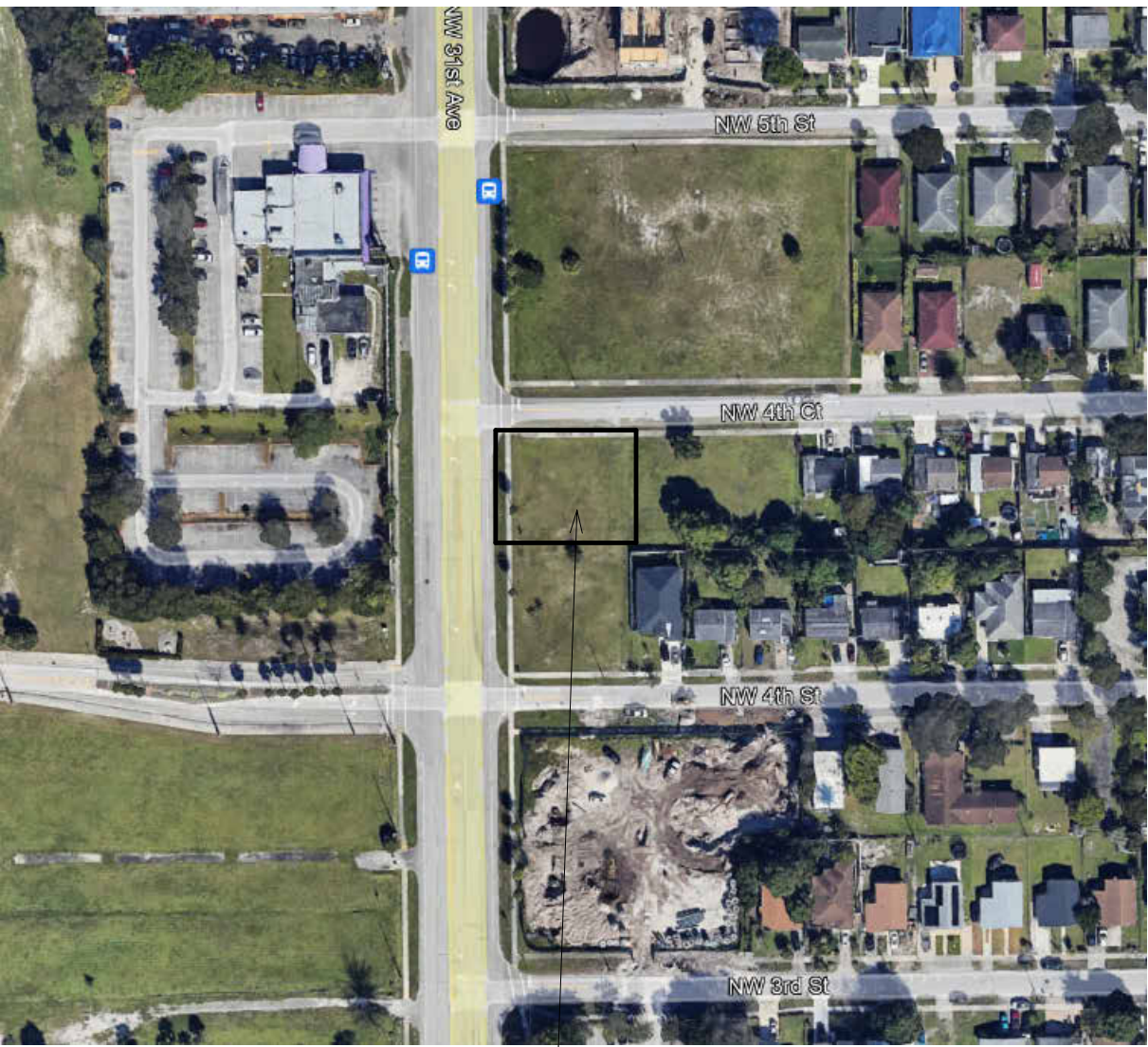


PROPOSED 4-TOWNHOUSE DEVELOPMENT FOR:  
LOT 930 (PARCEL-A) COLLIER CITY  
POMPANO BEACH, FL 33069



LOT 930 COLLIER CITY POMPANO  
BEACH, FL 33069 (PARCEL A)

LOCATION MAP



**LLR** Architects, Inc.  
ARCHITECTURE & PLANNING  
9000 SHERIDAN STREET ST. 158  
PEMBROKE PINES, FL 33024

(OFF.) – 305–403–7926  
(CELL)– 786–543–0851  
E–MAIL: LLAROSA@LAROSAARCHITECTCTS.COM

*Luis LaRosa*-Registered  
Architect  
AR#–0017852

SHEET INDEX

Sheet Index	
SHEET NUMBER	SHEET NAME
..A 0.0	COVER SHEET
GN-1.1	SITE DATA
.SP-1.1	SITE PLAN
.SP-1.2	SITE PLAN DETAILS
.SP-1.3	SITE PLAN CPTED
.SP-1.4	PHOTOMETRIC PLAN
.SP-1.5	IRRIGATION PLAN
A 1.1	1ST FLOOR PLAN
A 1.2	2ND FLOOR PLAN
A 1.3	ROOF PLAN
A 2.1	ELEVATIONS
A 2.2	ELEVATIONS
C-002	CIVIL COVER

AYLWARD ENGINEERING  
CIVIL ENGINEERING

3222 RIDGE TRACE  
DAVIE,FLORIDA 33328

(O)- 954-424-5852

E-MAIL: AYLWARDENGINEER@GMAIL.COM

BRANDON M. WHITE- ASLA  
LANDSCAPE ARCHITECTURE

1708 SW JOY HAVEN ST  
PORT ST. LUCIE, FL 34983  
(O)-772-834-1357